

# APPENDIX 14A

PHASE ONE OF THE EASTERN NODE SOUTHERN ENVIRONS MASTERPLAN  
RESIDENTIAL AND NEIGHBOURHOOD DEVELOPMENT  
CLONMINCH, TULLAMORE, CO OFFALY  
LVIA FIGURES AND REPRESENTATIVE VIEWPOINTS

JUNE 2021 / PROJECT NO. 6473

REVB



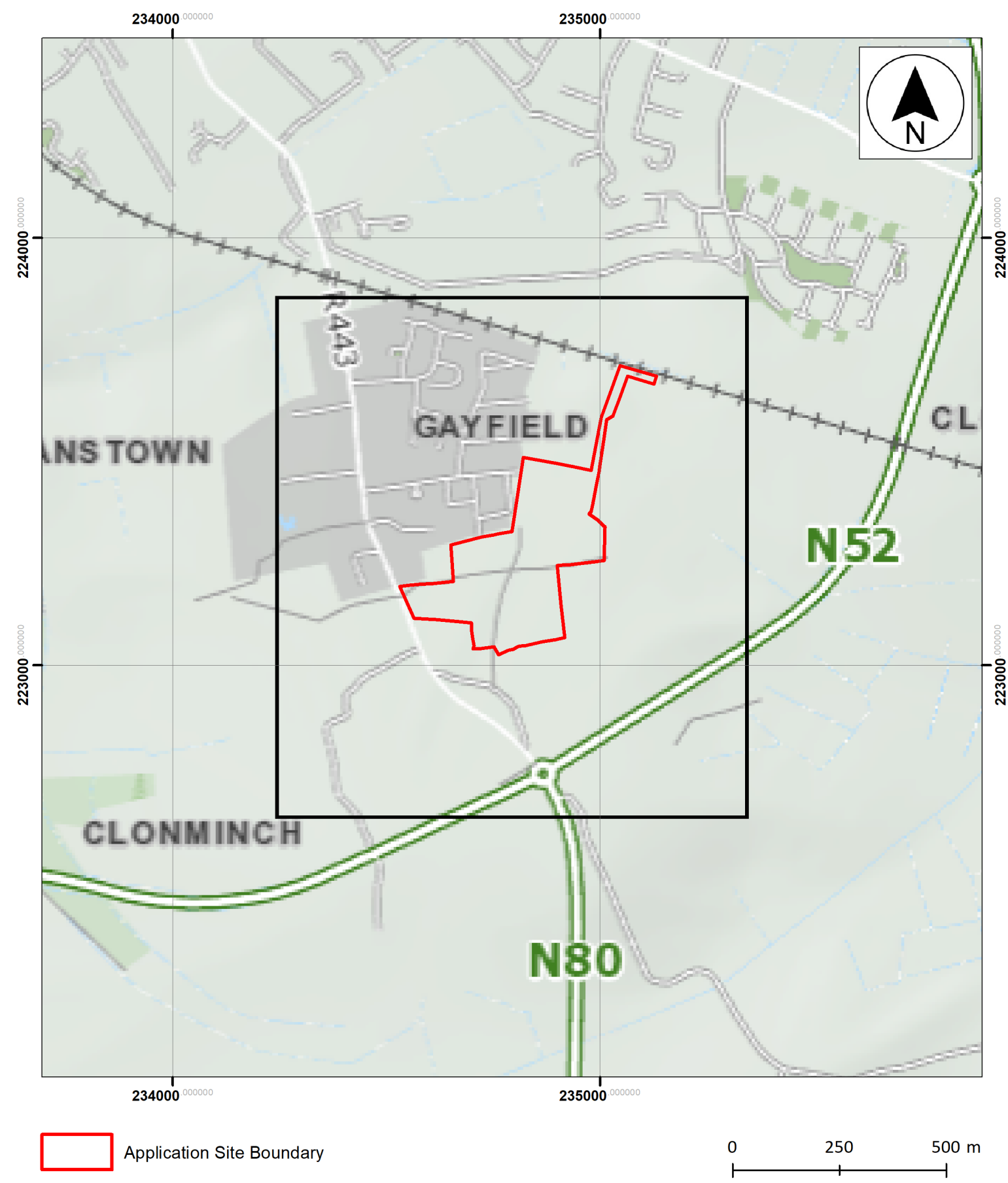


Figure 14.1: Site Location Plan








 Application Site Boundary

Figure 14.2: Existing Landscape Setting



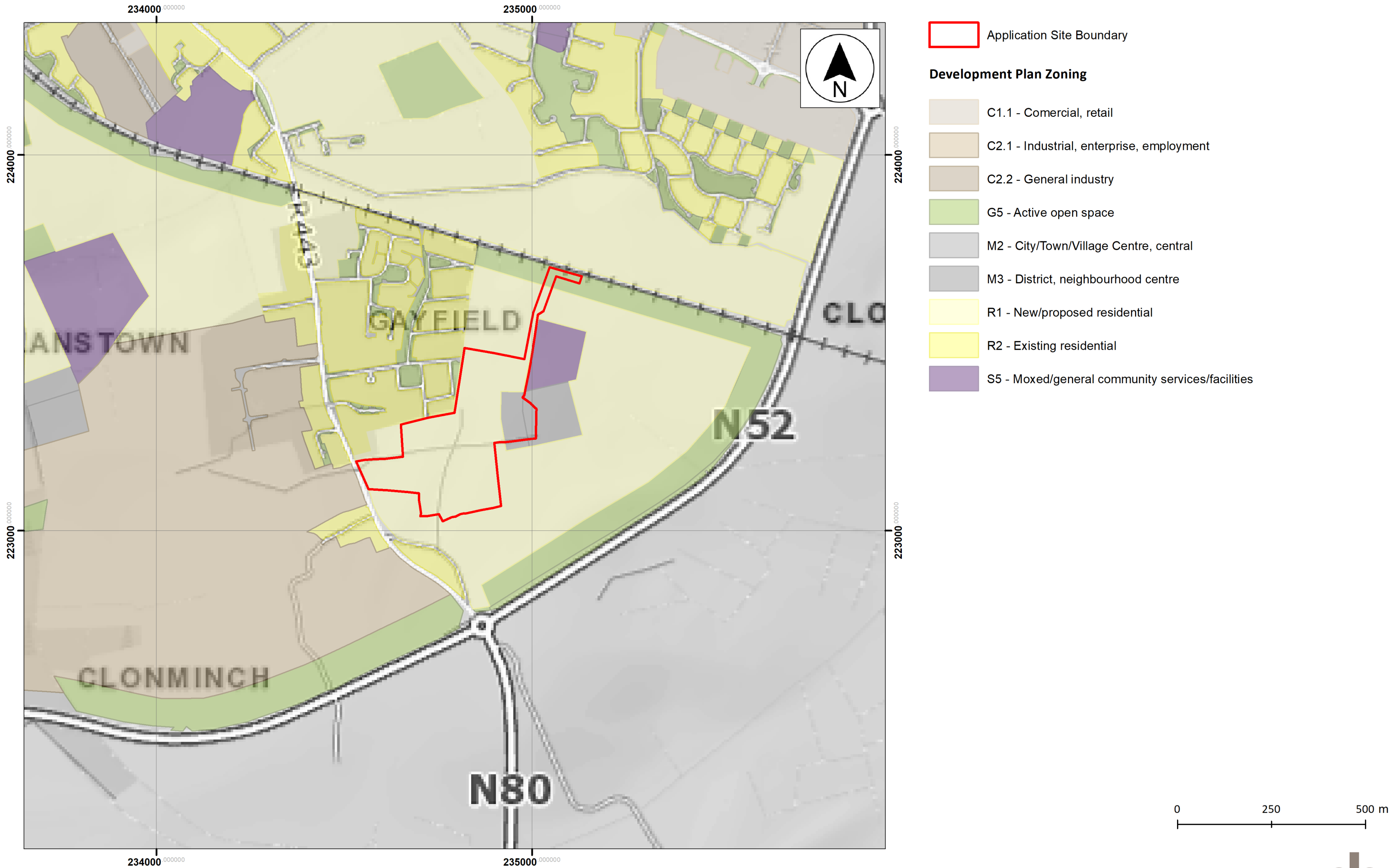


Figure 14.3: Development Zones





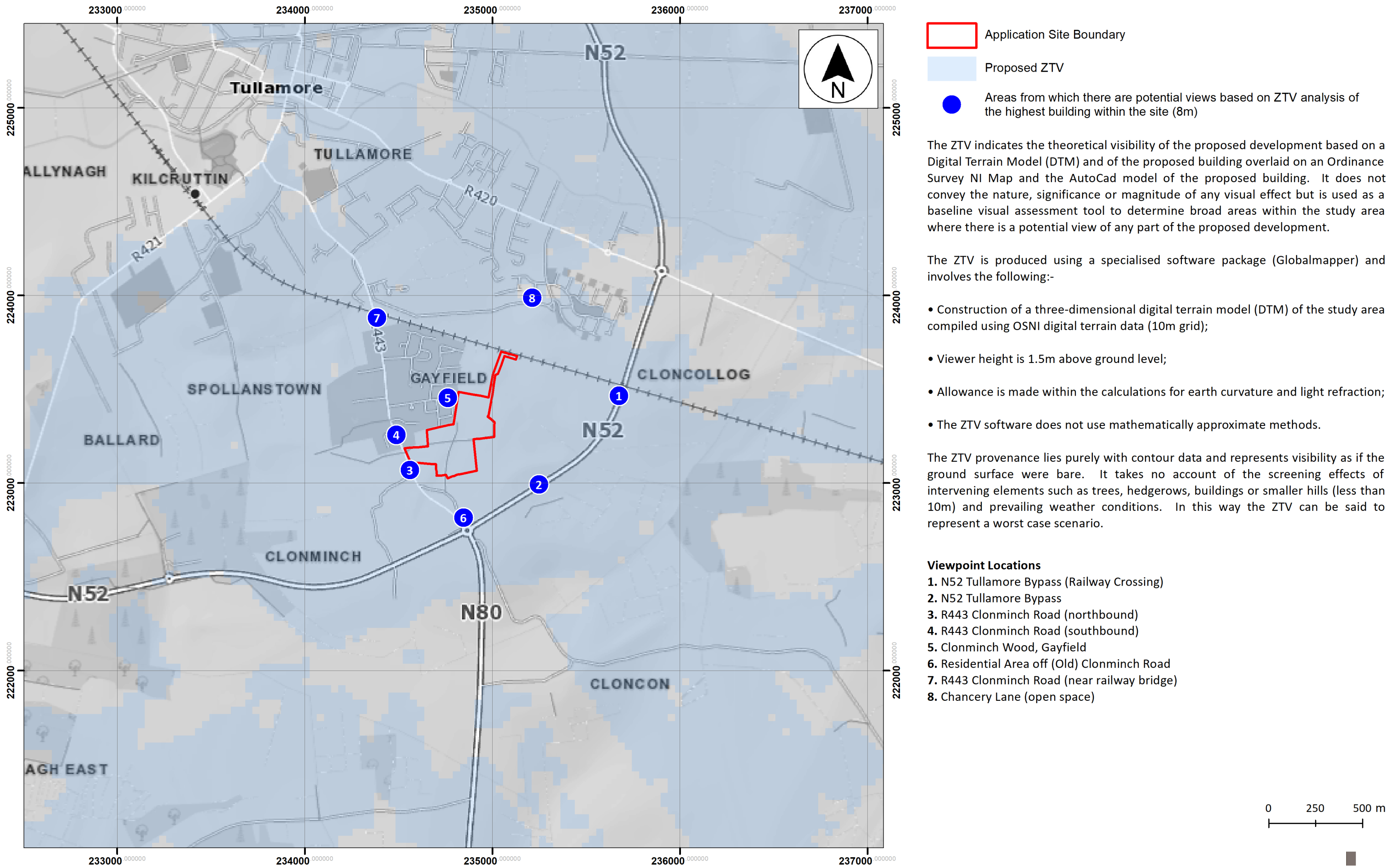


Figure 14.4: Zones of Theoretical Visibility and Viewpoints Map





Application Site Boundary

Figure 14.5: Proposed Landscape Setting







Figure 14.6: Eastern Node Masterplan







Wireframe and Verification



OS reference:	235676 E 223466 N
Eye level:	70m AOB
Direction of view:	279°
Distance to site:	668.9m
Horizontal field of view:	90° (cylindrical projection)
Paper size:	420 x 297 mm (A3)
Correct printed image size:	390 x 94 mm
Camera:	Canon EOS 6D
Lens:	50mm (Canon EF 50mm f/1.8)
Camera height:	1.5m AGL
Date and time:	001/06/2020 09:50

Figure 14.7: Viewpoint 1 | N52 Tullamore Bypass (Railway Crossing)







Figure 14.8: Viewpoint 1 | N52 Tullamore Bypass (Railway Crossing)





Existing



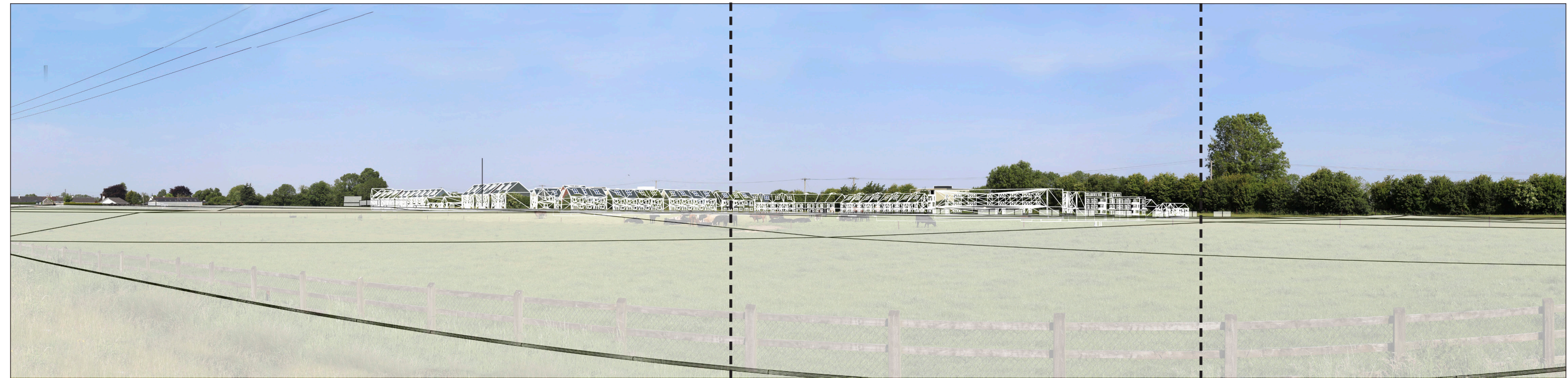
Proposed

OS reference:	235676 E 223466 N	Horizontal field of view:	90° (cylindrical projection)	Camera:	Canon EOS 6D
Eye level:	70m AOB	Paper size:	420 x 297 mm (A3)	Lens:	50mm (Canon EF 50mm f/1.8)
Direction of view:	279°	Correct printed image size:	390 x 94 mm	Camera height:	1.5m AGL
Distance to site:	668.9m			Date and time:	01/06/2020 09:50

Figure 14.9: Viewpoint 1 | N52 Tullamore Bypass (Railway Crossing)







Wireframe and Verification



OS reference:	235676 E 223466 N
Eye level:	70m AOB
Direction of view:	279°
Distance to site:	668.9m
Horizontal field of view:	90° (cylindrical projection)
Paper size:	420 x 297 mm (A3)
Correct printed image size:	390 x 94 mm
Camera:	Canon EOS 6D
Lens:	50mm (Canon EF 50mm f/1.8)
Camera height:	1.5m AGL
Date and time:	01/06/2020 10:02

Figure 14.10: Viewpoint 2 | N52 Tullamore Bypass





Figure 14.11: Viewpoint 2 | N52 Tullamore Bypass





Existing



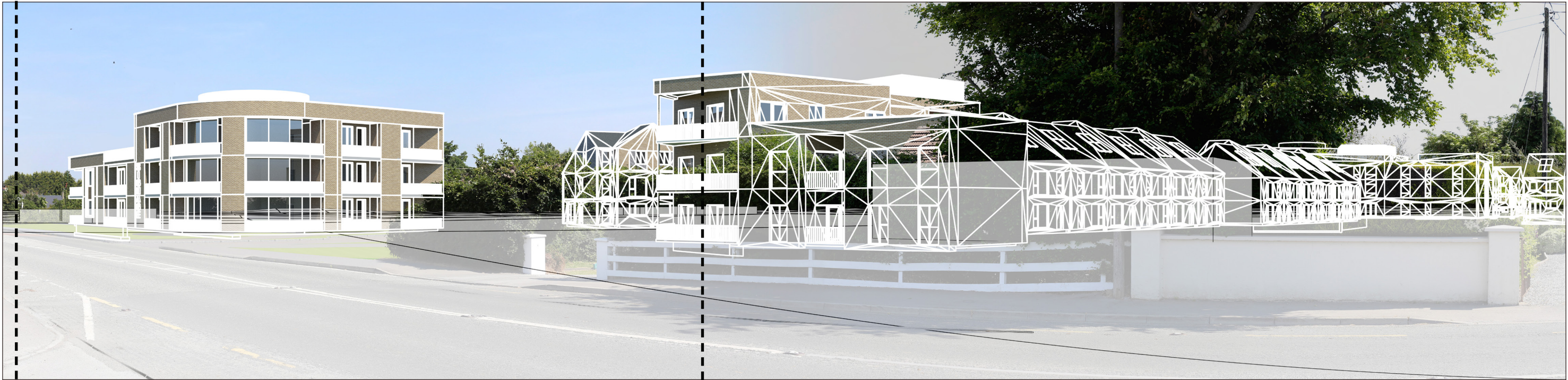
Proposed

OS reference:	235676 E 223466 N	Horizontal field of view:	90° (cylindrical projection)	Camera:	Canon EOS 6D
Eye level:	70m AOB	Paper size:	420 x 297 mm (A3)	Lens:	50mm (Canon EF 50mm f/1.8)
Direction of view:	279°	Correct printed image size:	390 x 94 mm	Camera height:	1.5m AGL
Distance to site:	668.9m			Date and time:	01/06/2020 10:02

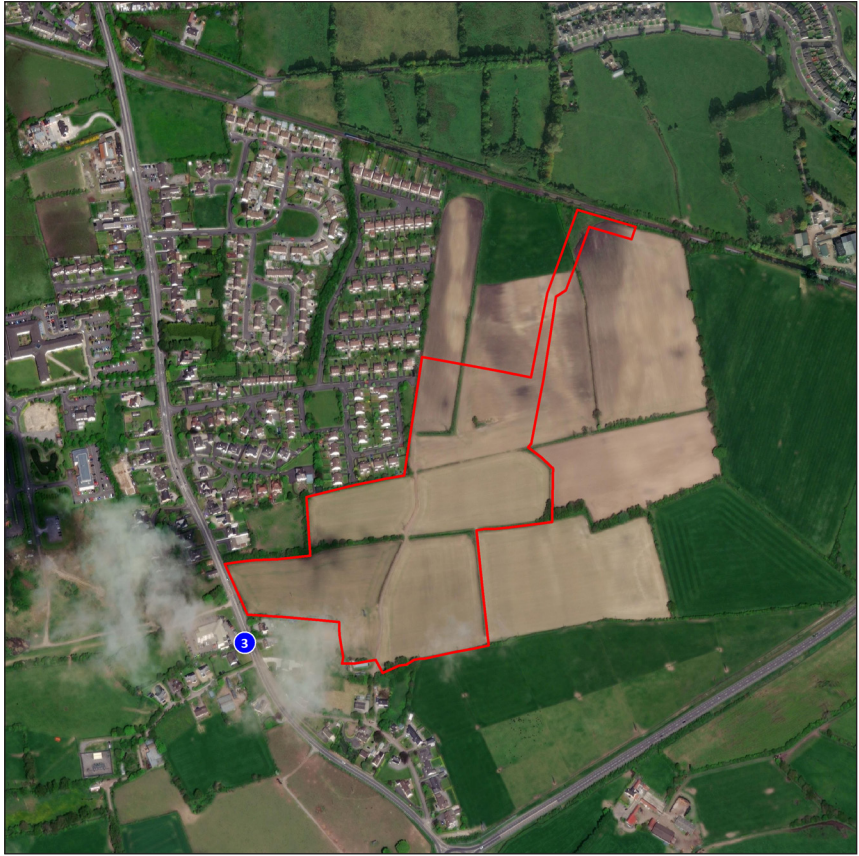
Figure 14.12: Viewpoint 2 | N52 Tullamore Bypass







Wireframe and Verification



OS reference:	234561 E 223069 N
Eye level:	74.2m AOB
Direction of view:	5°
Distance to site:	41m
Horizontal field of view:	90° (cylindrical projection)
Paper size:	420 x 297 mm (A3)
Correct printed image size:	390 x 94 mm
Camera:	Canon EOS 6D
Lens:	50mm (Canon EF 50mm f/1.8)
Camera height:	1.5m AGL
Date and time:	01/06/2020 11:30

Figure 14.13: Viewpoint 3 | R443 Clonmich Road (northbound)





Figure 14.14: Viewpoint 3 | R443 Clonmich Road (northbound)





Existing

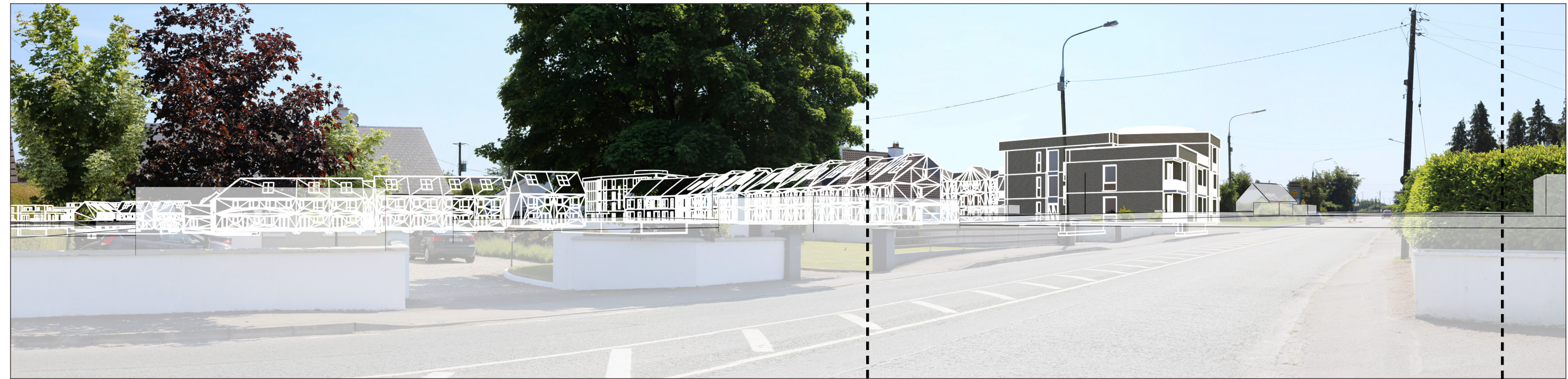


Proposed

OS reference:	234561 E 223069 N	Horizontal field of view:	90° (cylindrical projection)	Camera:	Canon EOS 6D
Eye level:	74.2m AOB	Paper size:	420 x 297 mm (A3)	Lens:	50mm (Canon EF 50mm f/1.8)
Direction of view:	5°	Correct printed image size:	390 x 94 mm	Camera height:	1.5m AGL
Distance to site:	41m			Date and time:	01/06/2020 11:30

Figure 14.15: Viewpoint 3 | R443 Clonmich Road (northbound)





Wireframe and Verification



OS reference:	234489 E 223258 N
Eye level:	71.5m AOB
Direction of view:	150°
Distance to site:	84.8m
Horizontal field of view:	90° (cylindrical projection)
Paper size:	420 x 297 mm (A3)
Correct printed image size:	390 x 94 mm
Camera:	Canon EOS 6D
Lens:	50mm (Canon EF 50mm f/1.8)
Camera height:	1.5m AGL
Date and time:	00/00/2020 11:38

Figure 14.16: Viewpoint 4 | R443 Clonminch Road (southbound)







Figure 14.17: Viewpoint 4 | R443 Clonminch Road (southbound)





Existing



Proposed

OS reference:	234489 E 223258 N	Horizontal field of view:	90° (cylindrical projection)	Camera:	Canon EOS 6D
Eye level:	71.5m AOB	Paper size:	420 x 297 mm (A3)	Lens:	50mm (Canon EF 50mm f/1.8)
Direction of view:	150°	Correct printed image size:	390 x 94 mm	Camera height:	1.5m AGL
Distance to site:	84.8m			Date and time:	00/00/2020 11:38

Figure 14.18: Viewpoint 4 | R443 Clonminch Road (southbound)







Wireframe and Verification



OS reference:	234769 E 223455 N
Eye level:	70.5m AOB
Direction of view:	98°
Distance to site:	51.7m
Horizontal field of view:	90° (cylindrical projection)
Paper size:	420 x 297 mm (A3)
Correct printed image size:	390 x 94 mm
Camera:	Canon EOS 6D
Lens:	50mm (Canon EF 50mm f/1.8)
Camera height:	1.5m AGL
Date and time:	01/06/2020 11:45

Figure 14.19: Viewpoint 5 | Clonminch Wood, Gayfield





Figure 14.20: Viewpoint 5 | Clonminch Wood, Gayfield





Existing



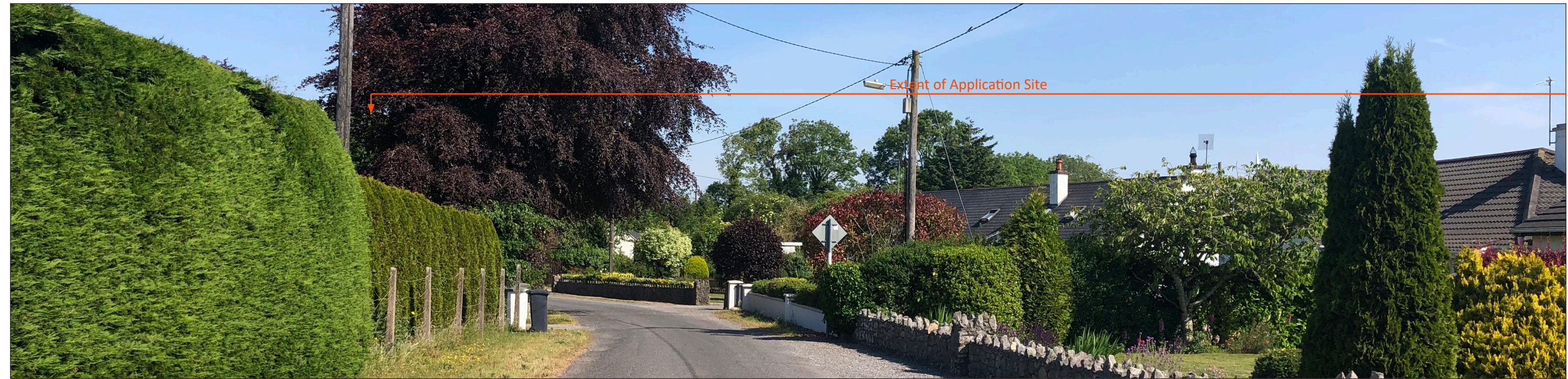
Proposed

OS reference:	234769 E 223455 N	Horizontal field of view:	90° (cylindrical projection)	Camera:	Canon EOS 6D
Eye level:	70.5m AOB	Paper size:	420 x 297 mm (A3)	Lens:	50mm (Canon EF 50mm f/1.8)
Direction of view:	98°	Correct printed image size:	390 x 94 mm	Camera height:	1.5m AGL
Distance to site:	51.7m			Date and time:	01/06/2020 11:45

Figure 14.21: Viewpoint 5 | Clonminch Wood, Gayfield







Extent of Application Site



OS reference:	234846 E 222815 N
Eye level:	76.5m AOB
Direction of view:	338°
Distance to site:	226.6m
Horizontal field of view:	90° (cylindrical projection)
Paper size:	420 x 297 mm (A3)
Correct printed image size:	390 x 94 mm
Camera:	Canon EOS 6D
Lens:	50mm (Canon EF 50mm f/1.8)
Camera height:	1.5m AGL
Date and time:	01/06/2020 10:09

Figure 14.22: Viewpoint 6 | Residential Area off (Old) Clonminch Road







Extent of Application Site



OS reference:	234385 E 223881 N
Eye level:	65.7m AOB
Direction of view:	132°
Distance to site:	587.2m
Horizontal field of view:	90° (cylindrical projection)
Paper size:	420 x 297 mm (A3)
Correct printed image size:	390 x 94 mm
Camera:	Canon EOS 6D
Lens:	50mm (Canon EF 50mm f/1.8)
Camera height:	1.5m AGL
Date and time:	001/06/2020 11:56

Figure 14.23: Viewpoint 7 | R443 Clonminch Road (near railway bridge)





Wireframe and Verification



OS reference:	235214 E 223987 N
Eye level:	65.7m AOB
Direction of view:	195°
Distance to site:	321.1m
Horizontal field of view:	90° (cylindrical projection)
Paper size:	420 x 297 mm (A3)
Correct printed image size:	390 x 94 mm
Camera:	Canon EOS 6D
Lens:	50mm (Canon EF 50mm f/1.8)
Camera height:	1.5m AGL
Date and time:	01/06/2020 12:05

Figure 14.24: Viewpoint 8 | Chancery Lane (open space)





**Head Office**

Hawarden House  
163 Upper Newtownards Road  
Belfast BT4 3HZ

Other offices in London and Dublin

**T:** +44 (0)28 9029 8020

**E:** [info@parkhood.com](mailto:info@parkhood.com)

**[parkhood.com](http://parkhood.com)**